



LED
LUMINAIRES



SCHWABE HELLAS S.A.

MANUFACTURER OF ELECTROTECHNICAL DEVICES

LED STREET LIGHTS

RL108



LED STREET LIGHT FOR URBAN ROADS AND AREAS

Item	Power (W)	Voltage (V)	Specification	Luminous Efficiency (Lm/W)	PF	CRI	IP	CCT (K)
108-30W-C	30W	85-265V	400x172x60mm / beam angle 60x130°, ALU	80 Lm/W	>0,9	RA >70	IP 65	3000-6500K
108-50W-C	50W	85-265V	500x214x81mm / beam angle 60x130°, ALU	80 Lm/W	>0,9	RA >70	IP 65	3000-6500K
108-60W-C	60W	85-265V	500x214x81mm / beam angle 60x130°, ALU	80 Lm/W	>0,9	RA >70	IP 65	3000-6500K
108-100W-C	100W	85-265V	720x280x85mm / beam angle 60x130°, ALU	80 Lm/W	>0,9	RA >70	IP 65	3000-6500K
108-120W-C	120W	85-265V	720x280x85mm / beam angle 60x130°, ALU	80 Lm/W	>0,9	RA >70	IP 65	3000-6500K
108-150W-C	150W	85-265V	880x340x95mm / beam angle 60x130°, ALU	80 Lm/W	>0,9	RA >70	IP 65	3000-6500K
108-180W-C	180W	85-265V	880x340x95mm / beam angle 60x130°, ALU	80 Lm/W	>0,9	RA >70	IP 65	3000-6500K
108-60W-C-G2	60W	85-265V	500x214x81mm / beam angle 60x130°, ALU	100 Lm/W	>0,9	RA >70	IP 65	3000-6500K
108-100W-C-G2	100W	85-265V	720x280x85mm / beam angle 60x130°, ALU	100 Lm/W	>0,9	RA >70	IP 65	3000-6500K
108-120W-C-G2	120W	85-265V	720x280x85mm / beam angle 60x130°, ALU	100 Lm/W	>0,9	RA >70	IP 65	3000-6500K
108-150W-C-G2	150W	85-265V	880x340x95mm / beam angle 60x130°, ALU	100 Lm/W	>0,9	RA >70	IP 65	3000-6500K
108-180W-C-G2	180W	85-265V	880x340x95mm / beam angle 60x130°, ALU	100 Lm/W	>0,9	RA >70	IP 65	3000-6500K

SLZH-05



LED STREET LIGHT FOR URBAN ROADS AND AREAS

Article	Product Material	Power (W)	Voltage Range (V)	Frequency (Hz)	Power Factor	LM/W	Luminous Flu* (lm)	CCT (K)	Beam Angle	CRI	Lifetime	Ambient Temp. (°C)	IP	Product Size (mm)	Installation aperture diameters
SLZH-05-40	Aluminum die casting	40W	90-264V	50/60Hz	0,9	100	4000LM	2700-6500K	120	>70	>500000H	-35°C - 50°C	IP65	474x238x110mm	50mm
SLZH-05-60	Aluminum die casting	60W	90-264V	50/60Hz	0,9	100	6000LM	2700-6500K	120	>70	>500000H	-35°C - 50°C	IP65	644x303x132mm	60mm
SLZH-05-90	Aluminum die casting	90W	90-264V	50/60Hz	0,9	100	9000LM	2700-6500K	120	>70	>500000H	-35°C - 50°C	IP65	644x303x132mm	60mm
SLZH-05-120	Aluminum die casting	120W	90-264V	50/60Hz	0,9	100	12000LM	2700-6500K	120	>70	>500000H	-35°C - 50°C	IP65	864x375x168mm	80mm
SLZH-05-150	Aluminum die casting	150W	90-264V	50/60Hz	0,9	100	15000LM	2700-6500K	120	>70	>500000H	-35°C - 50°C	IP65	864x375x168mm	80mm
SLZH-05-175	Aluminum die casting	175W	90-264V	50/60Hz	0,9	98	17200LM	2700-6500K	120	>70	>500000H	-40°C - 50°C	IP65	864x375x168mm	80mm

LR101



LED STREET LIGHT FOR URBAN ROADS AND AREAS

Item	Power (W)	Voltage (V)	Specification	Luminous Efficiency (Lm/W)	PF	CRI	IP	CCT (K)
LR101-30W	30W	85-265V	365.8x84.4x135mm beam angle 70x140° ALU	100lm/W	>0,9	RA>70	IP65	6000K
LR101-50W	50W	85-265V	431.3x89.3x160mm beam angle 70x140° ALU	100lm/W	>0,9	RA>70	IP65	6000K
LR101-80W	80W	85-265V	431.3x89.3x160mm beam angle 70x140° ALU	100lm/W	>0,9	RA>70	IP65	6000K
LR101-100W	100W	85-265V	631.7x89.8x125mm beam angle 70x140° ALU	100lm/W	>0,9	RA>70	IP65	6000K
LR101-150W	150W	85-265V	631.7x89.8x125mm beam angle 70x140° ALU	100lm/W	>0,9	RA>70	IP65	6000K

LED OUTDOOR LIGHTING

SL50D



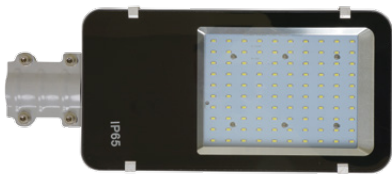
LED STREET LIGHT FOR URBAN ROADS AND AREAS

Model No.	Input voltage (V)	Watt (W)	CCT (K)	Luminous Flux@5700K (Lm)	Luminous Efficiency (Lm/W)	CRI (Ra)	PF	Life (hour)	Surge protection	IP	LED Quantity
SL50D-25	AC120-240V 50/60Hz	25	3000/4000/5700	2750	110	70	0.9	50000	10KV	IP65	40
SL50D-50	AC120-240V 50/60Hz	50	3000/4000/5700	5500	110	70	0.9	50000	10KV	IP65	80
SL100D-75	AC120-240V 50/60Hz	75	3000/4000/5700	8250	110	70	0.9	50000	10KV	IP65	120
SL100D-100	AC120-240V 50/60Hz	100	3000/4000/5700	11000	110	70	0.9	50000	10KV	IP65	160
SL50A-25	AC220-240V 50/60Hz	25	3000/4000/5700	2500	100	70	0.9	50000	10KV	IP65	40
SL50A-50	AC220-240V 50/60Hz	50	3000/4000/5700	5000	100	70	0.9	50000	10KV	IP65	80
SL100A-75	AC220-240V 50/60Hz	75	3000/4000/5700	7500	100	70	0.9	50000	10KV	IP65	120
SL100A-100	AC220-240V 50/60Hz	100	3000/4000/5700	10000	100	70	0.9	50000	10KV	IP65	160

DC driver

AC driver

SLYF



LED STREET LIGHT FOR URBAN ROADS AND AREAS

Item	Product Material	Power (W)	Voltage Range (V)	Frequency (Hz)	Power Factor	LM/W	Luminous Flux (lm)	CCT (K)	Beam Angle	CRI	Lifetime	Ambient Temp. (°C)	IP	Product Size (mm)	Installation aperture diameters
SLYF-50	Aluminum die casting	50W	AC100~240V	50/60HZ	0,9	90	4200-4800	2700-6500K	130	70	30000H	-40-40°C	65	500x210x70	60mm
SLYF-60	Aluminum die casting	60W	AC100~240V	50/60HZ	0,9	90	5200-5600	2700-6500K	130	70	30000H	-40-40°C	65	500x210x70	60mm
SLYF-100	Aluminum die casting	100W	AC100~240V	50/60HZ	0,9	90	8800-9200	2700-6500K	130	70	30000H	-40-40°C	65	616x210x70	60mm
SLYF-130	Aluminum die casting	130W	AC100~240V	50/60HZ	0,9	90	11500-11900	2700-6500K	130	70	30000H	-40-40°C	65	703x290x70	60mm
SLYF-150	Aluminum die casting	150W	AC100~240V	50/60HZ	0,9	90	13300-13700	2700-6500K	130	70	30000H	-40-40°C	65	830x330x70	60mm

SL302



LED STREET LIGHT FOR URBAN ROADS AND AREAS

Model No.	Input voltage (V)	Watt (W)	CCT (K)	Luminous Flux (Lm)	Luminous Efficiency (Lm/W)	CRI (Ra)	PF	Life (hour)	Surge protection	IP	LED Quantity
SL302-50	100-240	50	3000/4000/5700	6500	130	80	>0,9	50000	10KV	65	24
SL302-100	100-240	100	3000/4000/5700	13000	130	80	>0,9	50000	10KV	65	48
SL302-120	100-240	120	3000/4000/5700	15600	130	80	>0,9	50000	10KV	65	54
SL302-160	100-240	160	3000/4000/5700	20800	130	80	>0,9	50000	10KV	65	72

LED OUTDOOR LIGHTING

SOLAR LIGHT - SSL 55



SOLAR POWER LED STREET LIGHT FOR SMALL ROADS AND AREAS

Model No.	Watt (W)	CCT (K)	Luminous Flux (Lm)	Luminous Efficiency (Lm/W)	CRI (Ra)	Life (hour)	IP	Beam angle
SSL5-30W	30	3000/4000/5700	3900	130	80	30000	65	IESNA TYPE III
SSL5-50W	50	3000/4000/5700	6500	130	80	30000	65	IESNA TYPE III

LED FLOOD LIGHT

1010S



1020S



1030S



1050S



Model No.	Input	Power	PF	Ra	Stable Lumen Output	LED Type	LED qty	Housing color	Cable length	Cable: PVC or Rubbe	Lamp size (mm) L*W*H	SDCM	IP	Working Temperature	Lifetime (hours)	Certification	Certification lab	PIR Sensor	Detective distance	Detective range (beam angle)	Lux	Delay time
1010S	AC220-240V ~50/60Hz	10W	>=0.9	80	800lm	SMD 2835	12 pcs	grey/black white	15cm F3G1.0mm ²	H05RN Rubber	109x136x60	<=6	IP44	-25°--50°	20000h	CE	TUV	w or w/o PIR sensor	0-10M (adjustable)	120°	2-2000LUX (adjustable)	5SEC-10MIN (adjustable)
1020S	AC220-240V ~50/60Hz	20W	>=0.9	80	1600lm	SMD 2835	24 pcs	grey/black white	15cm F3G1.0mm ²	H05RN Rubber	129x145x60	<=6	IP44	-25°--50°	20000h	CE	TUV	w or w/o PIR sensor	0-10M (adjustable)	120°	2-2000LUX (adjustable)	5SEC-10MIN (adjustable)
1030S	AC220-240V ~50/60Hz	30W	>=0.9	80	2700lm	SMD 2835	42 pcs	grey/black white	15cm F3G1.0mm ²	H05RN Rubber	155x165x60	<=6	IP44	-25°--50°	20000h	CE	TUV	w or w/o PIR sensor	0-10M (adjustable)	120°	2-2000LUX (adjustable)	5SEC-10MIN (adjustable)
1050S	AC220-240V ~50/60Hz	50W	>=0.9	80	4000lm	SMD 2835	70 pcs	grey/black white	15cm F3G1.0mm ²	H05RN Rubber	208x203x60	<=6	IP44	-25°--50°	20000h	CE	TUV	w or w/o PIR sensor	0-10M (adjustable)	120°	2-2000LUX (adjustable)	5SEC-10MIN (adjustable)

SL100

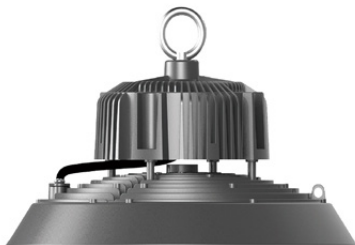


LED STREET LIGHT FOR URBAN ROADS AND AREAS

Model No.	Input voltage (V)	Watt (W)	CCT (K)	Luminous Flux (Lm)	Luminous Efficiency (Lm/W)	CRI (Ra)	PF	Life (hour)	Surge protection	IP	LED Quantity
SL100-25W	100-240V	25	3000/4000/5700	3000	120	80	>0.9	50000	10KV	66	36
SL100-50W	100-240V	50	3000/4000/5700	6000	120	80	>0.9	50000	10KV	66	65
SL100-75W	100-240V	75	3000/4000/5700	9000	120	80	>0.9	50000	10KV	66	90
SL100-100W	100-240V	100	3000/4000/5700	12000	120	80	>0.9	50000	10KV	66	126
SL100-150W	100-240V	150	3000/4000/5700	18000	120	80	>0.9	50000	10KV	66	195
SL100-200W	100-240V	200	3000/4000/5700	24000	120	80	>0.9	50000	10KV	66	264

LED INDOOR LIGHTING

HIGHBAY GC41



LED HIGHBAYS FOR WAREHOUSE, FACTORY AND OTHER AREA IN INDUSTRY

Model No.	Input voltage (V)	Watt (W)	CCT (K)	Luminous Flux (Lm)	Luminous Efficiency (Lm/W)	CRI (Ra)	PF	Life (hour)	Surge protection	IP	Beam angle
GC4-100	100-240V	100	3000/4000/5700	12000	120	80	>0.9	50000	6KV	65	110°/90° (optional reflector)
GC4-150	100-240V	150	3000/4000/5700	18000	120	80	>0.9	50000	6KV	65	110°/90° (optional reflector)
GC4-200	100-240V	200	3000/4000/5700	24000	120	80	>0.9	50000	6KV	65	110°/90° (optional reflector)
100W reflector	/	/	/	/	/	/	/	/	/	/	/
150/200W reflector	/	/	/	/	/	/	/	/	/	/	/

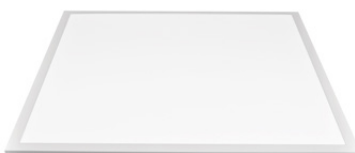
HIGHBAY GC4



LED HIGHBAYS FOR WAREHOUSE, FACTORY AND OTHER AREA IN INDUSTRY

Model No.	Input voltage (V)	Watt (W)	CCT (K)	Luminous Flux (Lm)	Luminous Efficiency (Lm/W)	CRI (Ra)	PF	Life (hour)	Surge protection	IP	Beam angle
GC4-100	220-240V	100	3000/4000/5700	10000	100	80	>0.9	30000	2KV	65	110°/90° (optional reflector)
GC4-150	220-240V	150	3000/4000/5700	15000	100	80	>0.9	30000	2KV	65	110°/90° (optional reflector)
GC4-200	220-240V	200	3000/4000/5700	20000	100	80	>0.9	30000	2KV	65	110°/90° (optional reflector)
100W reflector	/	/	/	/	/	/	/	/	/	/	/
150/200W reflector	/	/	/	/	/	/	/	/	/	/	/

PANEL – XS6060 PL40



LED PANEL LIGHT

Model No.	Power	Product size	Input	LED chip qty	Frame style	Diffuser	IP	RA	Lumen	PF
XS-6060PL40	40W	595x595x30mm	220-240V	48PCS 2835	Flat frame	Ps 1.0MM	IP20	80	3600lm±10%	0,9

SPOTLIGHT - MR-16



SPOTLIGHT

Type	Real Power	Lumen	Size	PF	Voltage	Chip specification	chip qty
MR16, 3W	3W	250	50x55mm	≥0.4	220-240V	36V/30MA	6pcs
MR16, 4W	4W	330	50x55mm	≥0.4	220-240V	36V/30MA	7pcs
MR16, 5W	4W	400	50x55mm	≥0.4	220-240V	36V/30MA	7pcs
MR16, 6W	6W	470	50x55mm	≥0.5	220-240V	36V/30MA	7pcs
MR16, 7W	7W	500	50x55mm	≥0.5	220-240V	36V/30MA	7pcs

COMPANY PROFILE

SCHWABE HELLAS S.A. was established in 1974 in Athens, Greece. Today the Company, which is a major manufacturing located in two EU countries Greece and Bulgaria, specializes in the production of Ballasts for Fluorescent Lamps, High Pressure Mercury, M. Halide and Sodium Vapour Lamps as well as Transformers for Low Voltage Halogen Lamps.

Our long experience in production is being applied today in our brand new plant which is based in south Bulgaria. The new factory, **ASTRON LIGHTING SOLUTIONS** is today our main production plant and is exclusively authorized by us to produce magnetic ballasts and all the full range of Schwabe branded products, under our quality assurance, supervision and know how.

Moreover, as for the future of our factory, in this plant, we develop and expand new series of products, like Ignitors, Capacitors and LED fixtures for indoor and outdoor lighting.

We strive to follow the latest and up to date technology on our LED products, with a fine design and power efficiency on work performance, providing different shapes and sizes to meet all of our customers needs. Our LED fixtures are applicable for all commercial areas; from outdoor street lights for highways and parks to spots, panels or luminaires for indoor lighting.

As for our future regarding the technology and our planet, we are following an environmental friendly manner, operating with conscience and sensitivity for the environment.

Our Management Department engages to ensure, timeless, all of the required resources for the Environmental Policy implementation. Furthermore, engages for the continuous and non-stop environmental improvement and the abidance of the principles of sustainable development.



SCHWABE HELLAS S.A.

3rd km Koropi-Varis Avenue, Nr.77
19400 Koropi, Athens, Greece
Tel. +30 210 6623890 Fax. +30 210 6624861
e-mail: internationalsales@schwabe.gr

ASTRON LIGHTING SOLUTIONS Ltd

2867 Marino Pole, Petrich, Bulgaria
Tel: + 359 742 62445, Fax: +359 742 62 440
e-mail: office@astronlighting.com

www.schwabe.gr